



CUSTOM HOLLOW METAL DOORS AND FRAMES

The MPI Group, LLC
319 North Hills Road
Corbin, KY 40701
www.mpigroupllc.com

- DISTRIBUTED BY -

Project Name: _____

Location: _____

Architect: _____

Contractor: _____

Drawing Date: _____ By: _____

Revised: _____

Reference No: _____



FRAMES

Frame Gauge:

Interior- A60 _____ CRS _____ G90 _____
 Exterior- A60 _____ CRS _____ G90 _____

Jamb Anchor Gauge: _____ Per Jamb

Floor Anchor Gauge: _____ Adjustable

- Channel Head Reinf.- _____ gauge @frames over _____ " wide.
- Standard Face Weld Weld Full Depth & Width
- 12 Ga. Closer Reinf. _____ Ga. Closer Reinf.
- 7 Ga. Hinge Reinf. _____ Ga. Hinge Reinf.
- 11 Ga. Strike Reinf. _____ Ga. Strike Reinf.
- Hospital Stops _____ " @ _____ °

DOORS

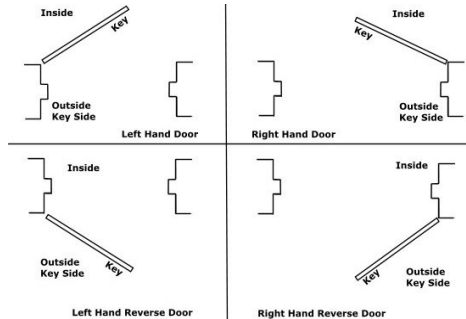
Door Gauge:

Interior- A60 _____ CRS _____ G90 _____
 Exterior- A60 _____ CRS _____ G90 _____

- Tack & Fill Seamless Edges
- Continuously Welded Edge Seams
- 7 Ga. Hinge Reinf. _____ Ga. Hinge Reinf.
- 11 Ga. Lock Reinf. _____ Ga. Lock Reinf.
- _____ Ga. Stiffeners Polystyrene Core
- Close Tops Flush At Exterior Doors Sealed

HARDWARE LOCATIONS - MPI STANDARD _____

DOOR AND FRAME HANDING CHART



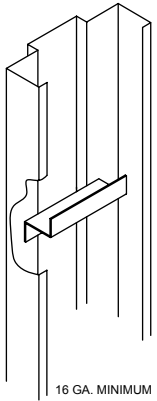
Special Notes: _____



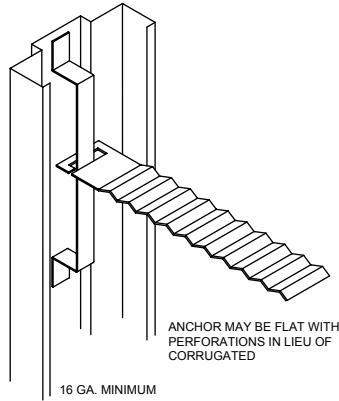
MATERIAL SPECIFICATIONS

Drawn By: _____ Date: _____

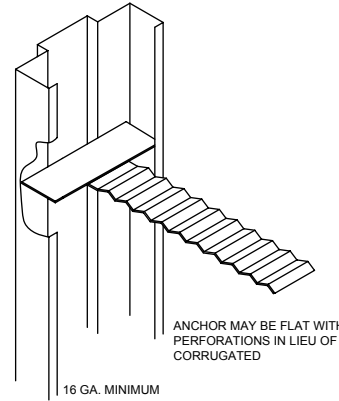
Sheet _____ of _____



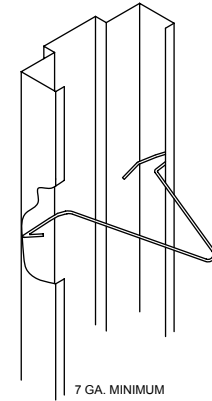
16 GA. MINIMUM
METAL STUD ANCHOR
(MSA)



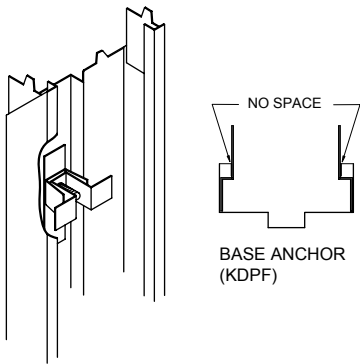
16 GA. MINIMUM
MASONRY ANCHOR
(MAS)



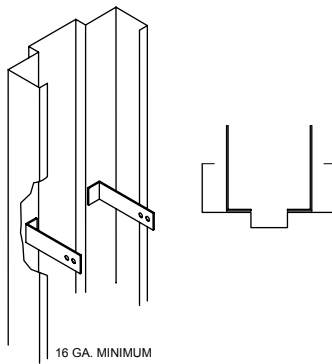
16 GA. MINIMUM
MASONRY T-ANCHOR
(MTA)



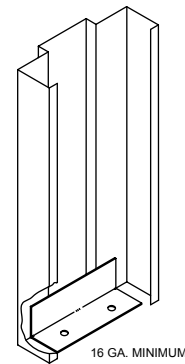
7 GA. MINIMUM
MASONRY WIRE ANCHOR
(MWA)



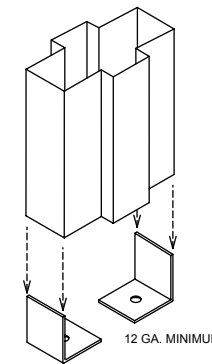
NO SPACE
BASE ANCHOR
(KDPF)
COMPRESSION ANCHOR
(KDPF)



16 GA. MINIMUM
WOOD STUD ANCHOR
(WSA)



16 GA. MINIMUM
WELDED FLOOR CLIP
(WFC)



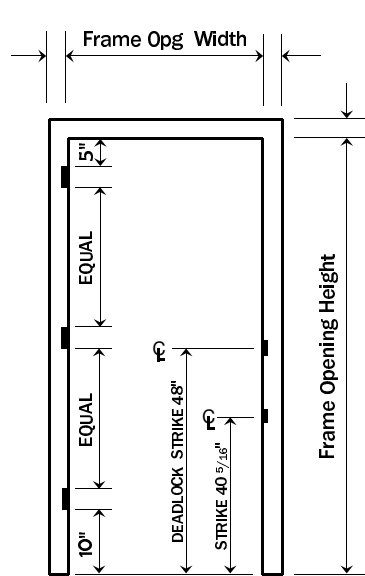
12 GA. MINIMUM
MULL BASE ANCHOR
(MBA)



FRAME ANCHORS

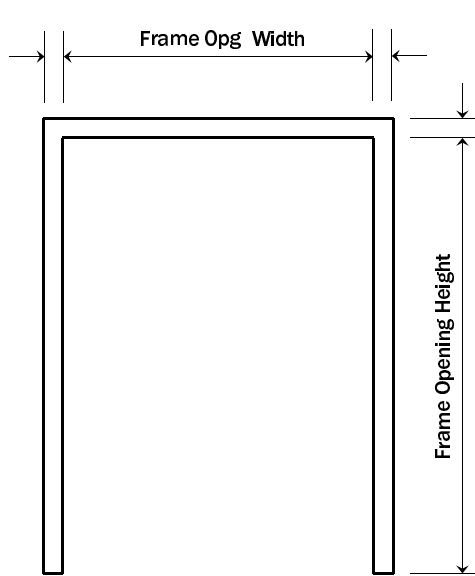
Drawn By: _____ Date: _____

Sheet _____ of _____

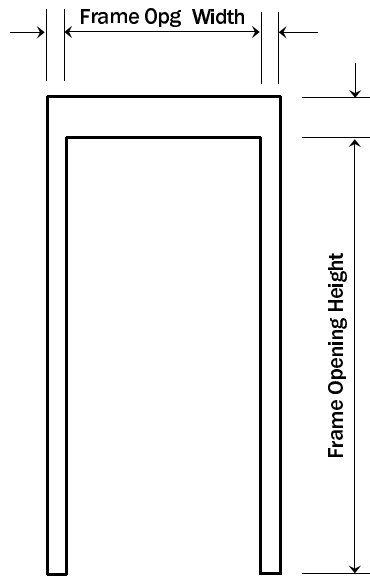


MPI STANDARD HDWE. LOCATIONS

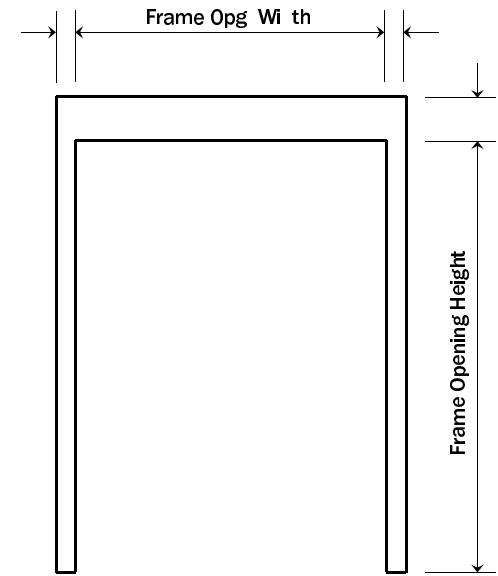
101



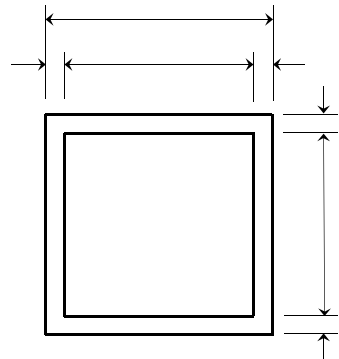
102



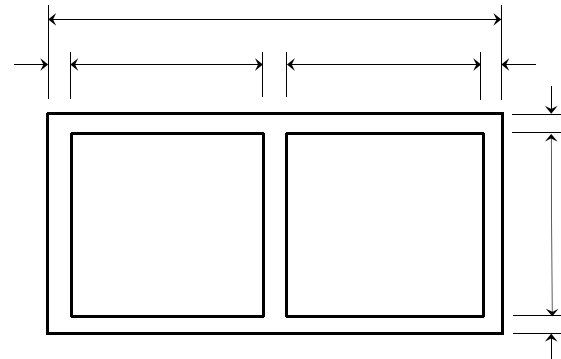
101A



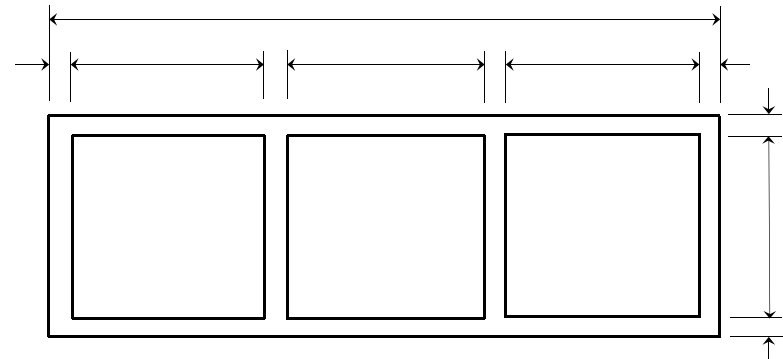
102A



VW1 _____" THK. GLAZING, BY OTHERS



VW2 _____" THK. GLAZING, BY OTHERS



VW3 _____" THK. GLAZING, BY OTHERS

F. Flr.

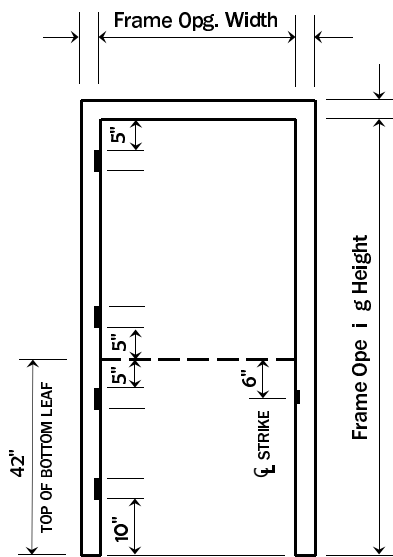


STANDARD FRAME ELEVATIONS

DWG. N.T.S.

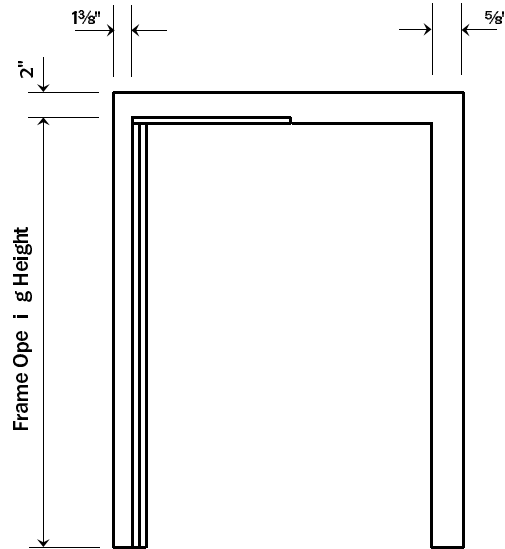
Drawn By: _____ Date: _____

Sheet _____ of _____



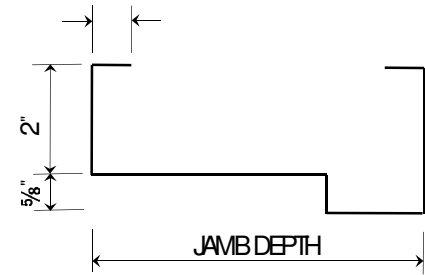
MPI STANDARD DUTCH DOOR FRAME

103

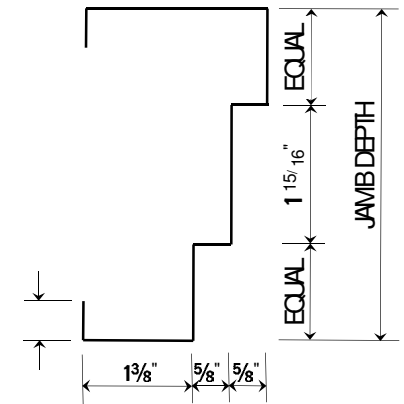


MPI STANDARD DOUBLE EGRESS FRAME

104



DOUBLE EGRESS HEAD



DOUBLE EGRESS JAMB

"DE"

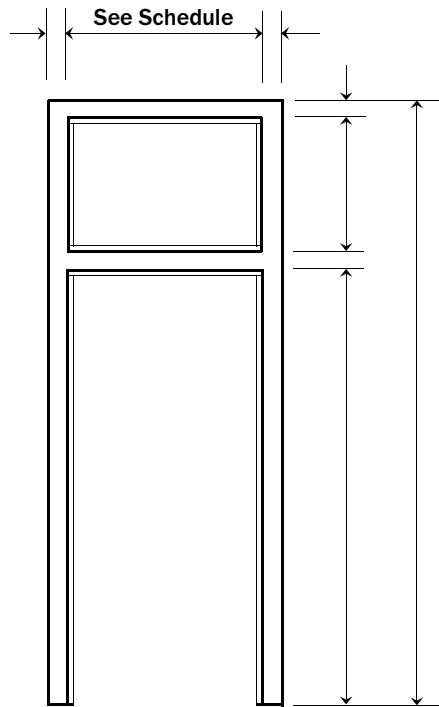


DUTCH DOOR FRAME & DOUBLE EGRESS FRAME

DWG. N.T.S.

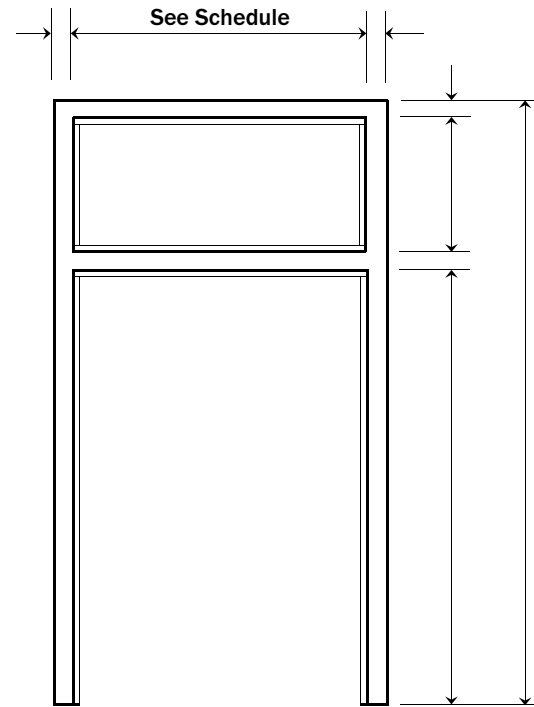
Drawn By: _____ Date: _____

Sheet _____ of _____



105

_____" THK. GLAZING,
BY OTHERS.
GLASS BEAD LOCATED-
 ON DOOR SIDE
 OPP. DOOR SIDE



106

_____" THK. GLAZING,
BY OTHERS.
GLASS BEAD LOCATED-
 ON DOOR SIDE
 OPP. DOOR SIDE



STANDARD TRANSOM FRAME ELEVATIONS

DWG. N.T.S.

Drawn By: _____ Date: _____

Sheet _____ of _____

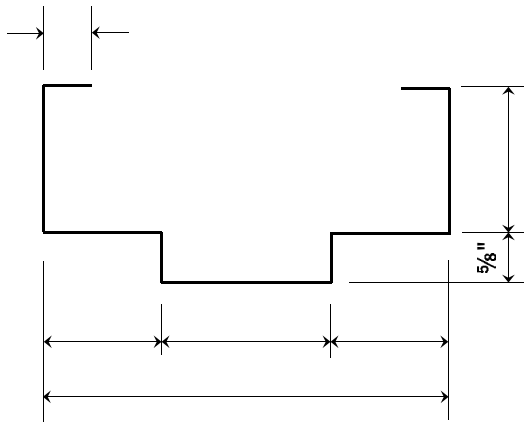


SPECIAL FRAME ELEVATIONS

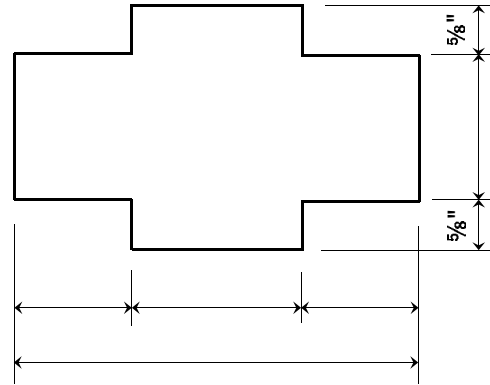
DWG. N.T.S.

Drawn By: _____ Date: _____

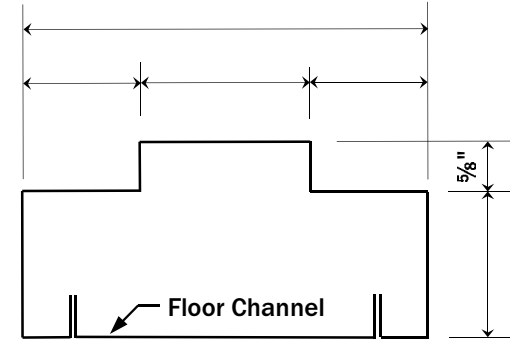
Sheet _____ of _____



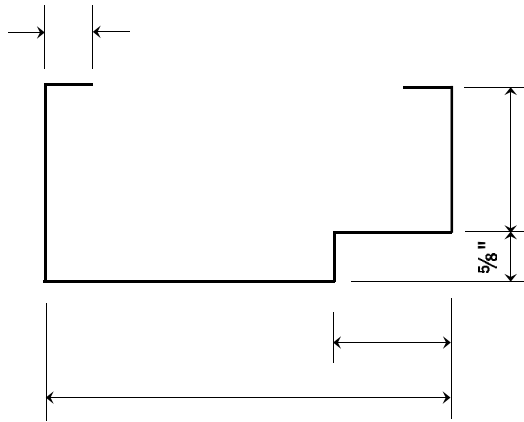
"A"



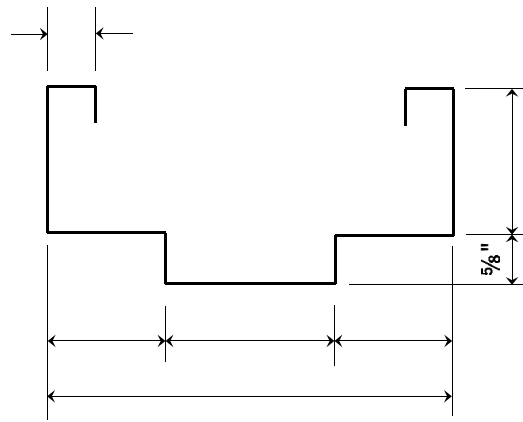
"B"



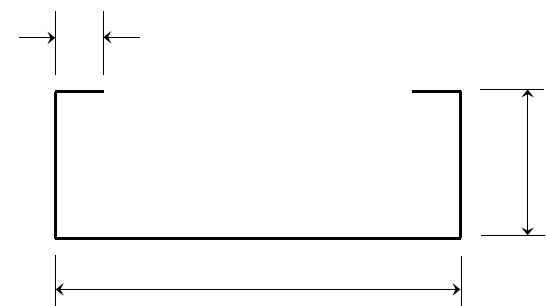
"E"



"F"



"G"



"J"



STANDARD JAMB TYPES

DWG. N.T.S.

Drawn By: _____ Date: _____

Sheet _____ of _____

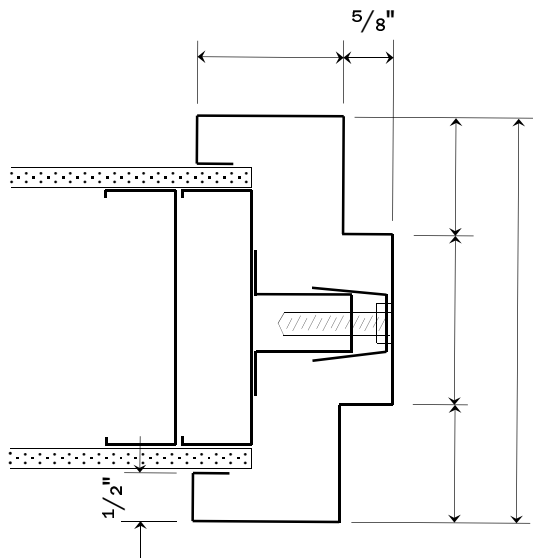


SPECIAL DETAILS

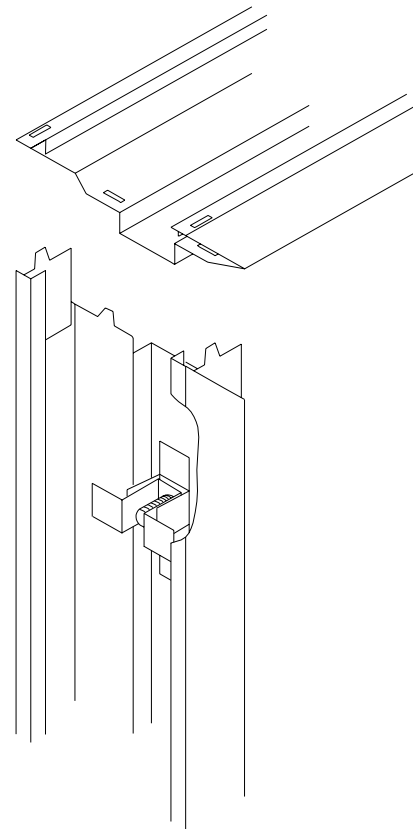
DWG. N.T.S.

Drawn By: _____ Date: _____

Sheet _____ of _____



"K"

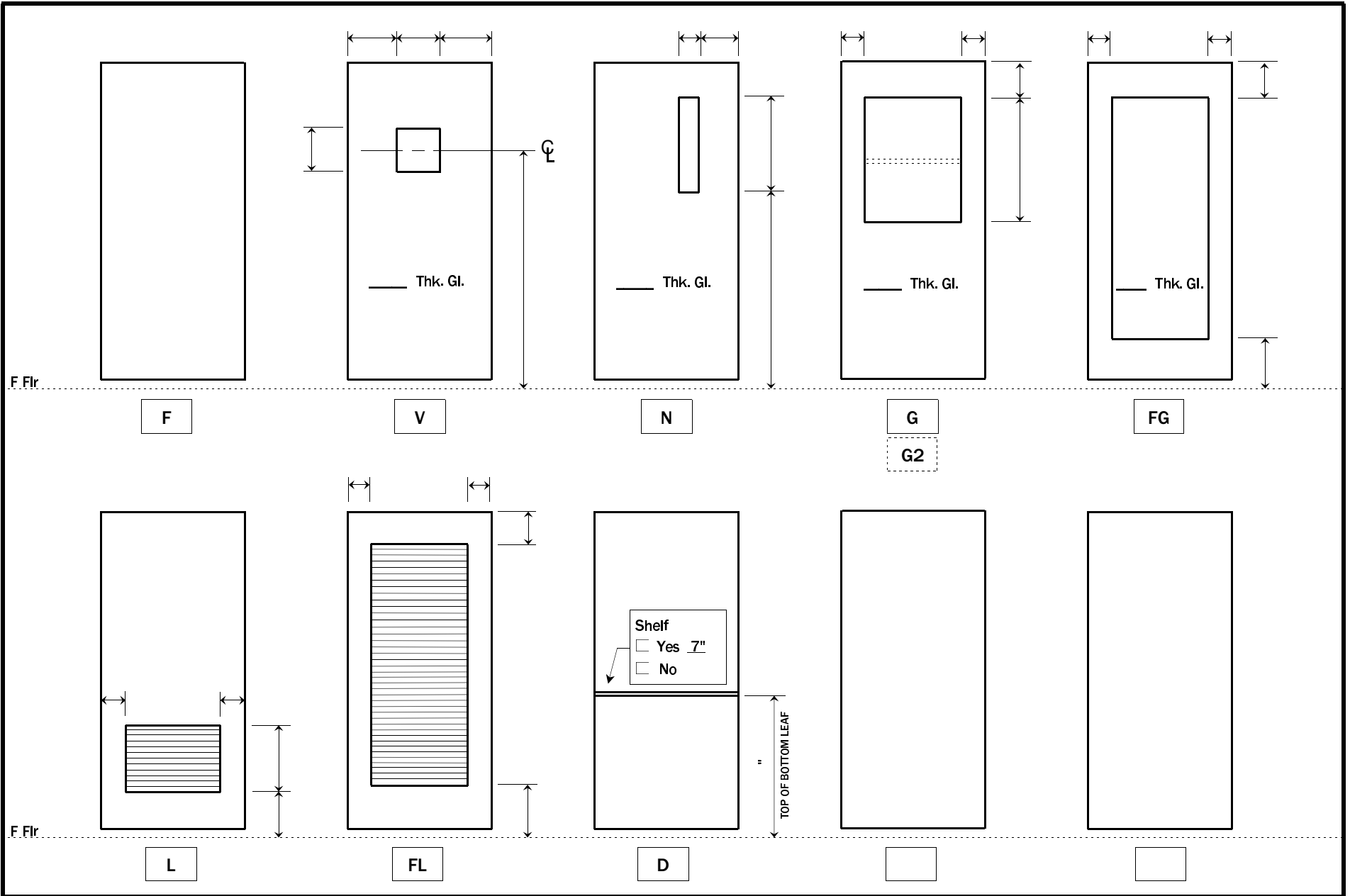


KD DRYWALL PRESSURE FIT FRAME DETAILS

DWG. N.T.S.

Drawn By: _____ Date: _____

Sheet _____ of _____



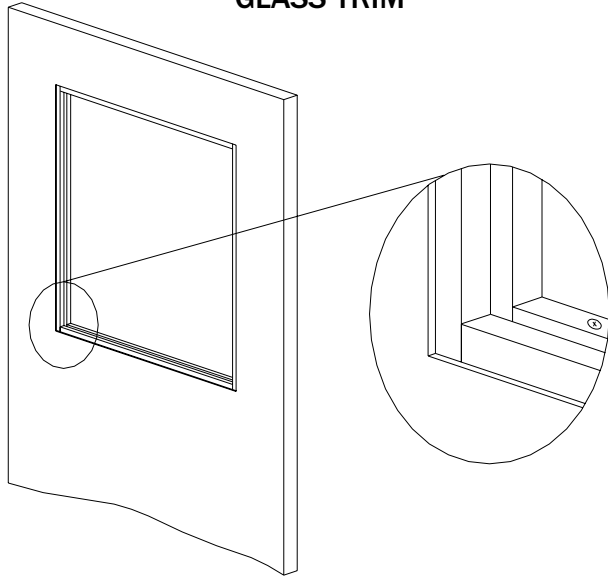
STANDARD DOOR ELEVATIONS

DWG. N.T.S.

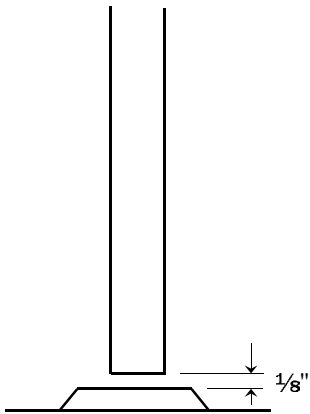
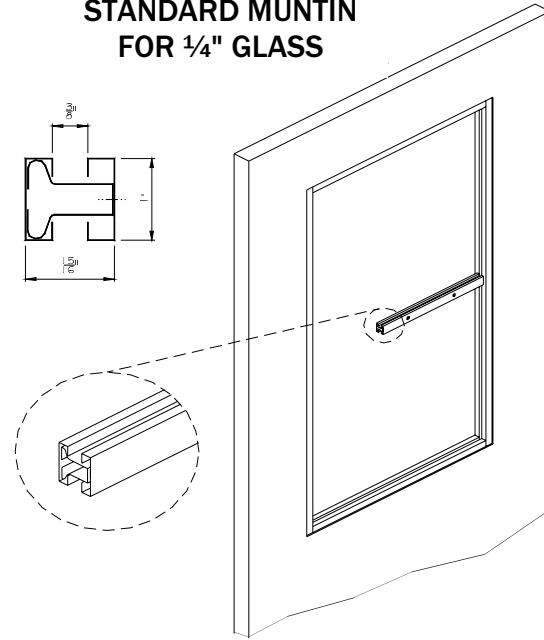
Drawn By: _____ Date: _____

Sheet _____ of _____

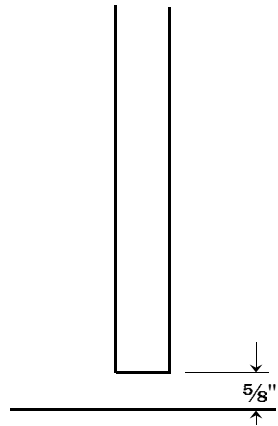
**STANDARD DOOR
GLASS TRIM**



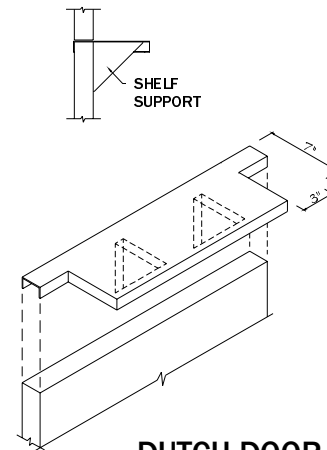
**STANDARD MUNTIN
FOR 1/4" GLASS**



UNDERCUT ABOVE THRESHOLD



UNDERCUT NO THRESHOLD



DUTCH DOOR SHELF

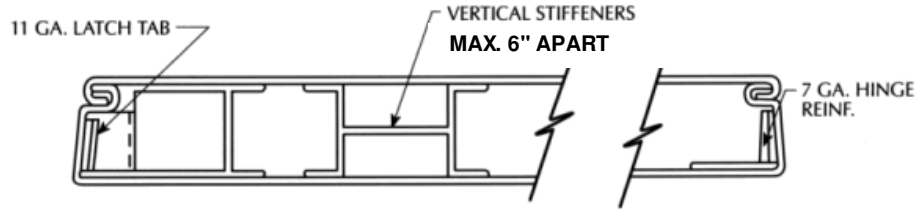
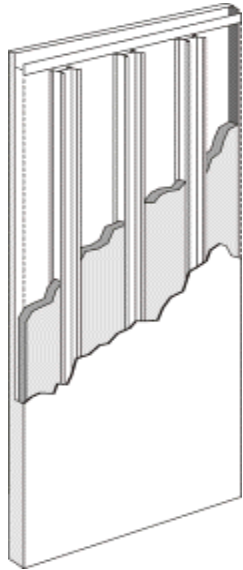


STANDARD DOOR DETAILS

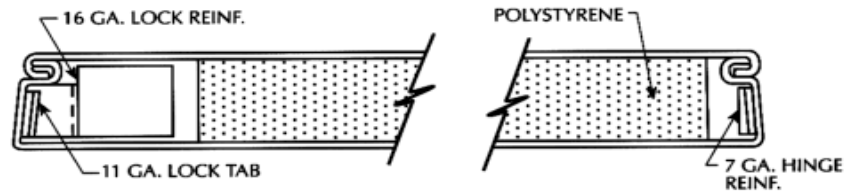
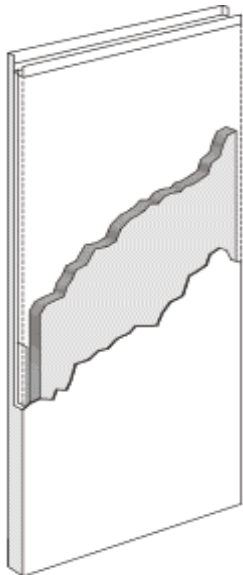
DWG. N .T.S.

Drawn By: _____ Date: _____

Sheet _____ of _____



STEEL STIFFENED DOOR



POLYSTYRENE CORE DOOR

STANDARD DOOR SPECIFICATIONS

FACE SHEET GAUGE	14, 16, 18
THICKNESS	1 ³ / ₄ "
EDGE SEAM	*
TOP & BOTTOM	CONT. 16GA. CHANNEL
GLASS TRIM	WELDED FLUSH TRIM
LOUVER	WELDED BLADE CONST
LOCK REINF.	11GA.
HINGE REINF.	7GA.
SURF. HDWE. REINF.	14GA.

* WELDED, FILLED & FINISHED SMOOTH IS STANDARD.
 OPEN SEAM AVAILABLE ONLY IN 18GA.
 OPTIONAL CONTINUOUSLY WELDED EDGE SEAM AVAILABLE.



DOOR CONSTRUCTION DETAILS

DWG. N.T.S.

Drawn By: _____ Date: _____

Sheet _____ of _____