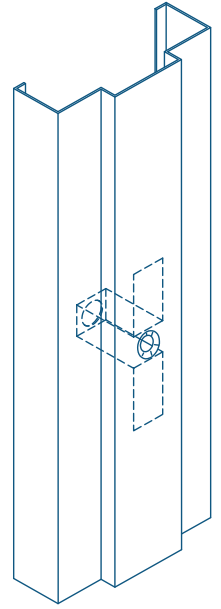
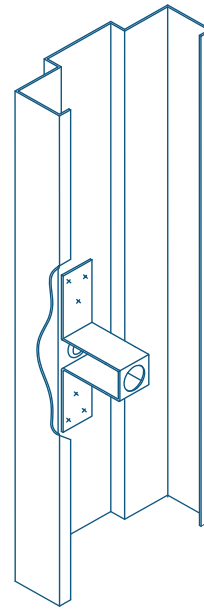
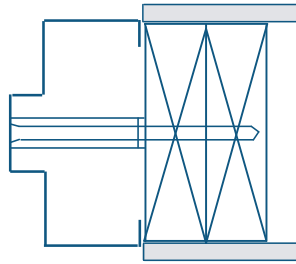
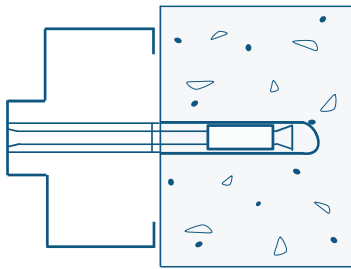


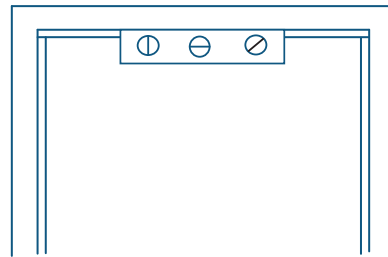
## WELDED STEEL FRAME INSTALLATION DETAILS FOR EXISTING WALLS

Frames for existing masonry walls are provided pre-machined with dimpled spacer holes to receive 3/8" expansion bolts and shields. This anchor type may also be utilized to anchor frames to existing wood stud framed openings.

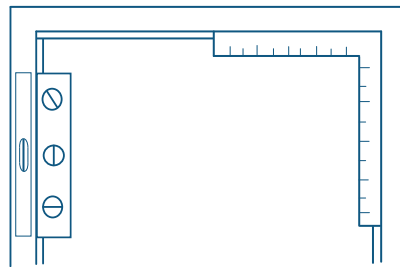
Anchors are spaced no more than 30" apart with the first anchor being located approximately 12" from the bottom of the frame.



- 1) Place frame in opening and level the head by shimming the bottom of the frame as required.



- 2) Plumb the jambs and square the head.



- 3) Mark masonry wall through spacer holes in the frame.
- 4) Remove the frame from the opening and drill holes as required to receive spacer.
- 5) Install shields in the holes.
- 6) Replace frame and attach to wall using flat head machine screws.



319 North Hills Road  
Corbin, KY 4070  
Phone: 606-523-046  
FAX: 606-528-6959  
[www.metalproductsinc.com](http://www.metalproductsinc.com)